



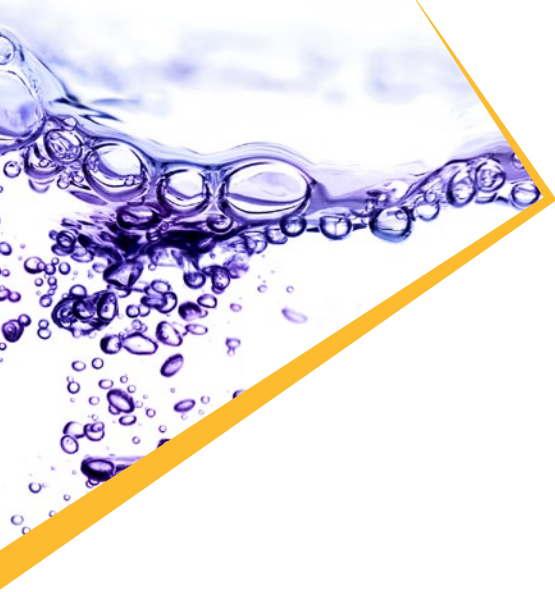
automated

accurate impositions

Kodak

Preps

Imposition Software



Kodak Preps Imposition Software is one of the most widely used pieces of software in the printing industry, running on both **Apple** and **MS Windows** computers. This industry-leading imposition software can be used with third-party RIPs and workflows or as an integrated part of a **Kodak** Unified Workflow Solution.

Kodak Preps Imposition Software—now in Version 6—is faster and easier to use, dramatically reducing job costs and turnaround times. It supports complex jobs for digital and conventional print with content elements and data coming from a variety of sources. Within a **Kodak** Unified Workflow Solution, **Preps** Software can deliver fully-automated impositioning within a zero-touch workflow.

In Version 6 of **Kodak Preps** Software, the user interface has been streamlined so new and advanced users will feel instantly at ease. The most common editing and previewing functions are now in a single convenient window. Impositions can be defined by simply dragging and dropping the required resources—plate and sheet dimensions, templates, folding patterns and marks—into the workspace.

Create, edit and preview impositions quickly

Impositions are faster to build—from scratch, or based on an existing template

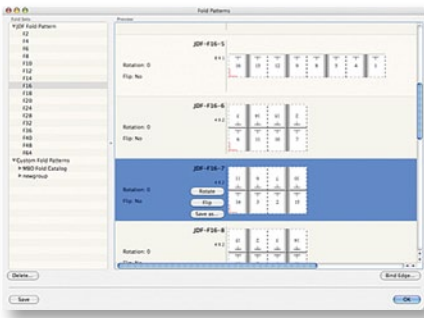
from the system's libraries of templates and folding patterns. A new Template Search utility accelerates searching.

Quickly set, edit and preview all bindery dimensions, for greater accuracy of spacing between pages and the bindery signature. Simply choose "Generate Press Runs" to automatically create a signature based on the job plan.

As a job is created, the job is previewed in real time. Zoom in on single pages or complete signatures, including marks. When you change a mark, or a page or a layout's properties, the preview instantly updates, providing an instant check for potential errors.

Use the **SmartMarks** Software feature to place marks or groups of marks on press sheets, and save them in templates. The marks are placed relative to the sheet size, gutter, or page (rather than static placement). **SmartMarks** automatically reposition and resize themselves when press sheet sizes change.

Preps Software encourages consistent standards, through flexible, easy-to-use



Fold Pattern Catalog

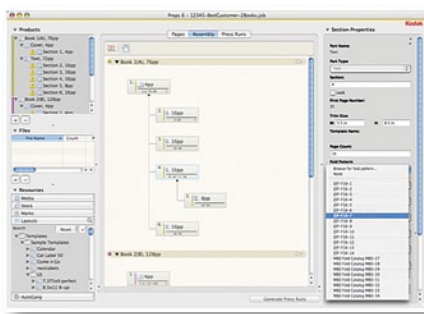
templates, and libraries of fold patterns and marks that are specific to the devices in your print shop. By applying templates and libraries, jobs can be repeated effectively, efficiently and automatically.

Plan complex jobs with ease

With the system's knowledge of a job's requirements, and your shop's resources, you can quickly create accurate impositions, even for jobs with multiple individual components. The system clearly defines the distinct production differences between covers and inside text sections, for example. To mix binding styles, simply drag-and-drop elements and then verify the final product in the Assembly View.

When a complex imposition is ready, you can print a report of the detailed job plan, for signoffs, or to include with the job ticket. Then output JDF information with the folding and cutting data, to speed up post press operations.

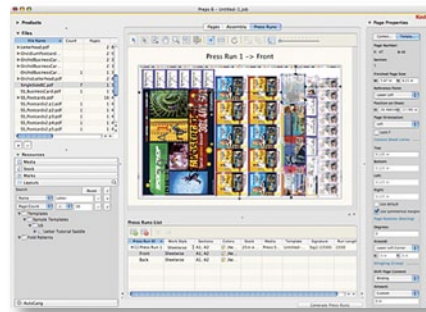
Maximize press sheets and minimize waste, automatically



Assembly view for complex bindery control

Use manual or auto-ganging to find the optimal arrangement of several jobs on a single press sheet—automatically rotate and arranging elements as necessary—to minimize press sheet waste and save on make ready time.

Automation that begins with the front office/MIS



Enhanced AutoGang functionality

Preps Software is JDF compliant, so you can import JDF files from management information systems (MIS), and automatically generate complete impositions from the MIS data. This can reduce or eliminate the need to manually create jobs. The system can automatically add press and bindery-specific marks. The "Mark Rules Editor" can add marks to automatically-created layouts, and then export the JDF data, with imposition layout and mark flats added.

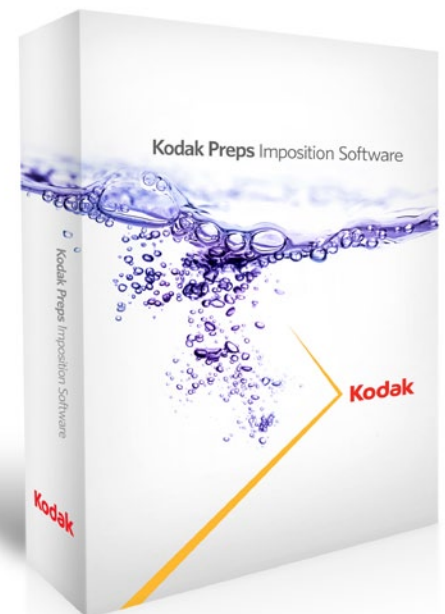
Industry standard PDF input, and output to digital and offset prepress systems

Preps Software supports industry standard PDF files generated from all well known desktop publishing and workflow systems.

Output files can include postpress settings in the JDF output, so you can have one master control file with printing, cutting and binding data. Separate PPF cutting data files can also be generated for older non-JDF compliant postpress equipment.

Part of a Kodak Unified Workflow Solution

Preps Software can be integrated into a Kodak Unified Workflow Solution—a comprehensive, integrated solution for graphic communications, with a modular architecture that brings together business, production, color, and data management in a combined conventional and digital printing environment. Kodak Unified Workflow Solutions support conventional and digital print workflows, providing intelligent automation to increase efficiency and promote profitable growth.



Kodak Preps 6 Software Features

	Pro	Plus	Digital	Digital Pro
Sheet size capabilities	Unlimited*	Unlimited*	2-up**	2-up**
Mixed binding styles	■			
Assembly view	■			
Web-growth compensation	■			
Multiple part	■			
JDF Input	■			■
JDF Template Matching	■			■
JDF Auto Signature Creation	■			■
AutoGang (semi-automated)	■			■
AutoGang with hot folders (with Prinergy Preps Pro floating license only)	■			■
JDF Binding Data Output	■			■
CIP3 cutting data export (JDF, PPF, PJTF)	■			■
Automatic and custom tiling	■	■		
Fold pattern resource	■	■	■	■
JDF/PJTF/PDF/PS output	■	■	■	■
Multiple sections on one press sheet	■	■	■	■
SmartMarks and Mark Groups	■	■	■	■
Manual ganging (Windows and Mac OS)	■	■	■	■
Advanced Run List	■	■	■	■
Press Run View	■	■	■	■
Media, stock, mark, layout resources	■	■	■	■
Template search	■	■	■	■
JDF 1.2 and 1.3; CIP4 LayCrimp ICS certified (0610000201)	■	■	■	■

* Actual limitation is 400" x 400"

** Actual limitation is 14" x 22"

Preps 6 Software System Requirements

Macintosh	Mac OS X 10.4 or later
Windows	Windows XP or Vista OS Dongle-based licenses that require 64-bit support can be used with Windows XP , Vista, or Windows Server 2003 with Service Pack 2
Minimum hardware	1 GB RAM 1 GB free space 1280 x 960 screen resolution

To learn more about solutions from Kodak:

Visit graphics.kodak.com

Or in North America, call +1-866-563-2533

Produced using Kodak Technologies.

Eastman Kodak Company
343 State Street
Rochester, NY 14650 USA

©Kodak, 2009. Kodak, Preps and Prinergy are trademarks of Kodak.

Technical and environmental specifications subject to change.

U.ES.010.07.09.en.03 (K-808)

